



Snow Pusher

FEATURES

- 37" high side panels
- Strong, high-carbon steel cutting edge for long life
- Features the Quick Attach mounting system for fast, easy hook-up
- Easy-adjust depth shoes
- Optional "pull-back scraper blade" turns pusher into a "scraper" for more versatility.



Optional "Pull-Back" System for increased versatility. Helps pull back snow from tight spaces. Ideal for curbs, overhead doors, loading docks, and against buildings.

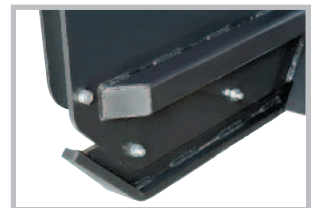
Move Mountains...

This Snow Pusher is designed to move a large volume of snow very quickly – up to five times faster than a conventional snow blade. The perfect way to remove snow from parking lots, driveways, and from up against buildings utilizing the optional "Pull Back" System.

The universal quick attach system fits most skid steers and compact tractors.



Tubular steel frame for added strength.



Extra thick 3/4" AR400 skid shoes are 2-position adjustable for depth control.



800-437-6912

www.erskineattachments.com



SKID STEER



MINI SKID STEER

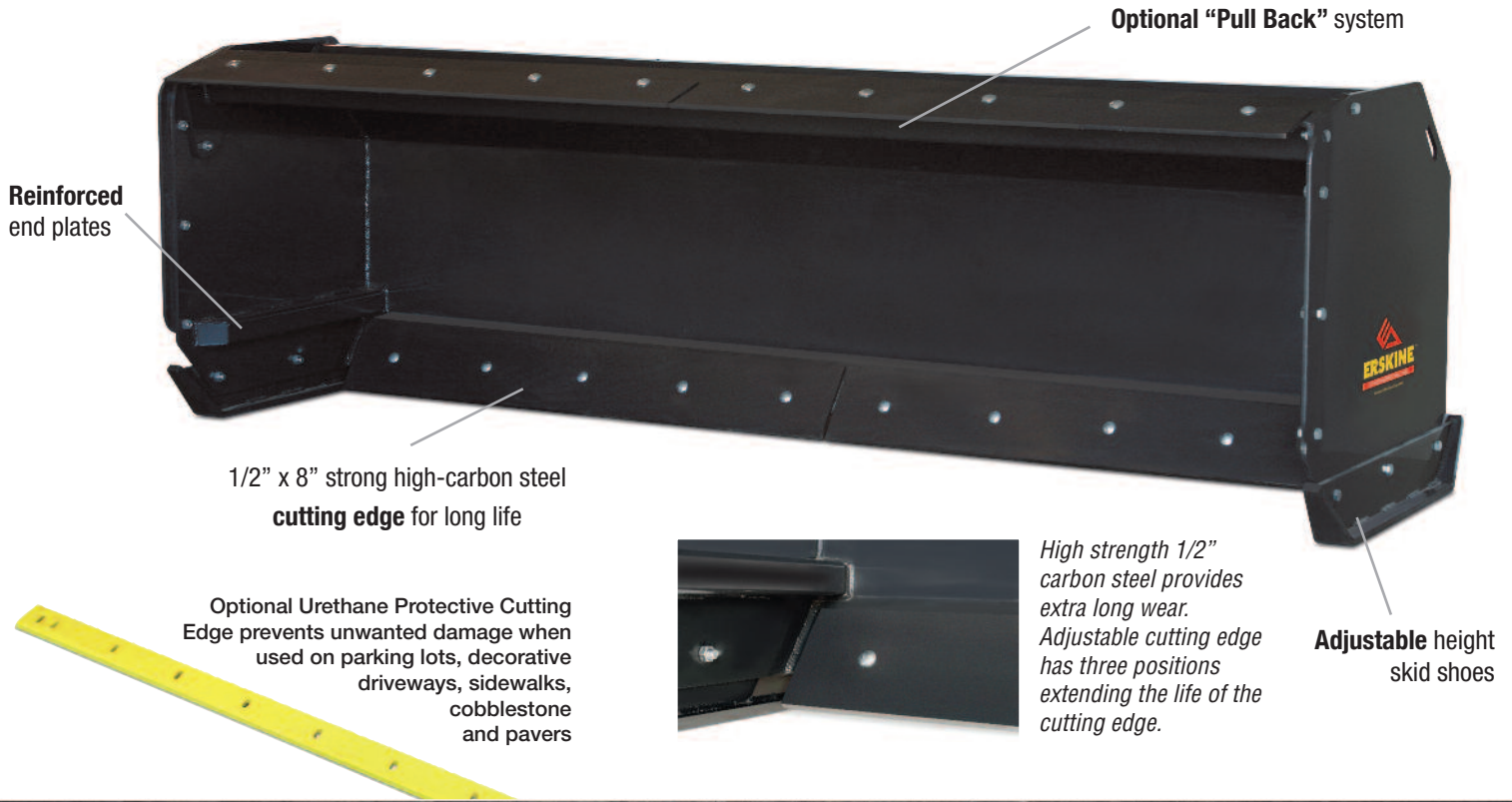


COMPACT TRACTOR

Snow Pusher

96" Model - #900782

120" Model - #900783



Optional "Pull Back" system

Reinforced end plates

1/2" x 8" strong high-carbon steel cutting edge for long life

Optional Urethane Protective Cutting Edge prevents unwanted damage when used on parking lots, decorative driveways, sidewalks, cobblestone and pavers

High strength 1/2" carbon steel provides extra long wear. Adjustable cutting edge has three positions extending the life of the cutting edge.

Adjustable height skid shoes

AVAILABLE OPTIONS

- 96" Model
- 120" Model
- 96" Pullback
- 120" Pullback
- 96" Urethane Cutting Edge
- 120" Urethane Cutting Edge

STANDARD SPECIFICATIONS

Model	96"	120"
Operating Weight	900#	980#
Max. Width	37"	37"
Max. Height	37"	37"
Max. Length	100"	125"
Main Cutting Edge	.5" x 8" Rev. High Carbon	.5" x 8" Rev. Hi Carbon
Opt. Pull Back Weight	190#	230#
Opt. Pull Back Cutting Edge	.375" x 6" Rev. Hi Carbon	.375" x 6" Rev. High Carbon
Opt. Urethane Cutting Edge	1.5" x 8" Urethane	1.5" x 8" Urethane



ERSKINE™

ATTACHMENTS, INC.

A Legacy of Excellence Since 1948

"And we know that in all things God works for the good of those who love him, who have been called according to his purpose." Romans 8:28

Prices and specifications subject to change without notice • F.O.B. the Factory