



ERSKINE[™]
ATTACHMENTS, INC.

SS

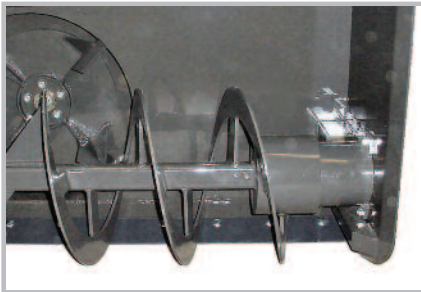
Skid Steer Snowblower

FEATURES

- Direct drive hydraulic auger
- Replaceable bolt-on high carbon-steel cutting edge
- Hydraulic relief – no shear pins
- Hydraulic control valve with electric solenoid controls all chute functions



Hydraulic chute rotation and deflector – eliminates metal-to-metal contact between blower and rotating chute base preventing freeze up.



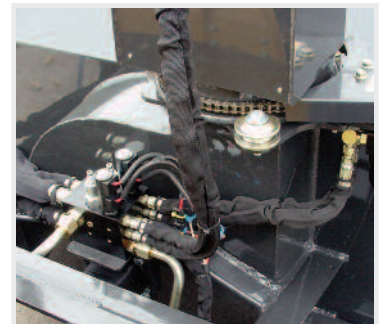
No chains, sprockets, or PTO shafts. Direct drive hydraulic auger eliminates problematic chain drive. Pressure relief valve replaces the need for shear pins.



Now the Best is Even Better...

This is the perfect blizzard battler. A quality built blower that really works! The Skid Steer Snowblower meets the tough demands of your skid steer loader, throwing snow up to 40' while clearing paths down to the ground. Featuring a No-Freeze-Up design! Two important factors must be considered when purchasing a snow blower for your skid steer loader – gallons per minute and hydraulic pressure (psi) are very important to the ultimate performance and your satisfaction. Erskine strongly recommends discussing these factors with us before purchasing a snowblower attachment for any skid steer. Every Erskine snowblower is custom engineered to provide maximum performance for each skid steer make and model.

Hydraulic control valve with electric solenoid to control chute functions with built-in pressure relief system eliminating the need for shear pins.



800-437-6912

www.erskineattachments.com



SKID STEER



MINI SKID STEER



COMPACT TRACTOR

Skid Steer Snowblower

- 53" Model ES1600 - #900455
- 61" Model ES2010 - #900962
- 73" Model ES2010 - #900963
- 79" Model ES2010 - #900964
- 85" Model ES2010 - #900965
- 73" Model ES2410 - #900973
- 85" Model ES2410 - #900974
- 73" Model ES2410XL - #900982
- 85" Model ES2410XL - #900983



Hydraulic chute rotation and deflection is standard equipment*. The Erskine design eliminates metal-to-metal contact between the blower and the rotating chute base, preventing freeze-up under any conditions.



Optional: Pistol Grip Control Harness is required if skid steer is **NOT** equipped with attachment control system



No-freeze-up chute design seals out snow and freezing slush

The fan is mounted on a hydraulic motor eliminating the need for a gear box

2010 Series pictured

Standard **high-carbon** steel cutting edge

The auger is protected by a **pressure relief valve** which replaces the need for shear pins

EAT-ON | Char-Lynn



Optional: Universal wire harness for hydraulic models with attachment controls. Fits Cat/ASV (8-pin) and John Deere/New Holland/CASE/Bobcat (14-pin)



Optional **Hardened Skid Shoe** on ES2010/ES2410



Optional **Urethane Skid Shoe** on ES2010 only

No chains, sprockets, or PTO shafts. Direct drive hydraulic auger eliminates problematic chain drive

STANDARD SPECIFICATIONS

Model	ES1600	ES2010	ES2410	ES2410XL
Stage	2	2	2	2
Width of Cut	53"	61" / 73" / 79" / 85"	73" / 85"	73" / 85"
Cutting Height	22"	29"	36"	36"
Cutting Edge	5/8" x 6" Bolt-on	5/8" x 6" Bolt-on	5/8" x 6" Bolt-on	5/8" x 6" Bolt-on
Skid Shoes	Optional	Optional	Optional	Optional
Auger Diameter	12" Open Flight	16" Open Flight	18" Open Flight	18" Open Flight
Fan Diameter	16" 4-Blade	20" 4-Blade	24" 4-Blade	24" 4-Blade
Chute Rotation	Hydraulic	Hydraulic 270°	Hydraulic 270°	Hydraulic 270°
Pressure Relief	Fan Only	Fan / Auger	Fan / Auger	Fan / Auger
Casting Distance	up to 25'	up to 30'	up to 40'	up to 40'
Approx. Ship. Weight	418#	850#	1,100#	1,300#
Mounting Plate	Mini Skid Steer	Universal	Universal	Universal
Hoses	Included	Included	Included	Included
Hyd. Flow Req.	10-14 GPM	11-25 GPM	24-38 GPM	30-50+ GPM

* Deflection not available on Model ES1600



ERSKINE™

ATTACHMENTS, INC.

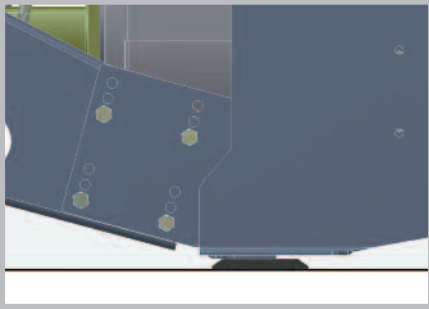
A Legacy of Excellence Since 1948

"But God demonstrates his own love for us in this: While we were still sinners, Christ died for us." Romans 5:8

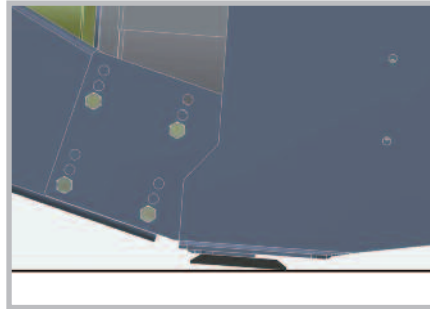


ERSKINE[™]
ATTACHMENTS, INC.

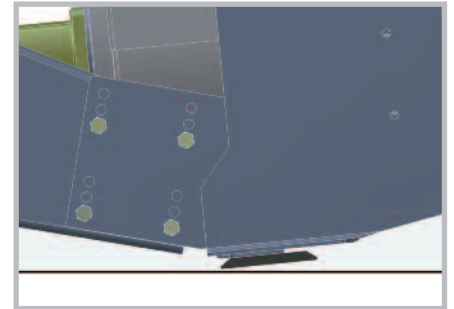
Skid Steer Snowblower



Normal cut.



Aggressive cut.



No cut.



NEW & IMPROVED

- The durable new 5/8" x 6" cutting edge design provides significantly more surface area, allowing it to act as a skid shoe and extending the life of the cutting edge. You can now achieve the desired cutting effect simply by controlling the angle of the snowblower
- Shortened end plates allow the auger to lead. In hard packed snow, the auger makes contact first and starts chewing it up for maximum effectiveness and reduced resistance
- The cut back top design provides better visibility and allows snow to fall into the auger to be blown rather than slide off the back of the snowblower
- The new cutting edge extends beyond the end plates, adding wear bar protection



800-437-6912

www.erskineattachments.com



SKID STEER



MINI SKID STEER



COMPACT TRACTOR



AVAILABLE OPTIONS

ES1600 Series 53" Model
 ES2010 Series 61" Model
 ES2010 Series 73" Model
 ES2010 Series 79" Model
 ES2010 Series 85" Model
 ES2410 Series 73" Model
 ES2410 Series 85" Model
 ES2410XL Series 73" Model
 ES2410XL Series 85" Model

Pistol Grip Control Harness
 Quick Attach Universal Wire Harness
 Factory Installed Faster Flat-Faced Couplers
 Factory Installed Parker Flat-Faced Couplers
 Hydraulic Truck Loading Chute
 ES2010/2410 Hardened Skid Shoes
 ES2010 Urethane Skid Shoes
 Protective Urethane Cutting Edge
 61", 73", 79", 85"



ERSKINETM

ATTACHMENTS, INC.

A Legacy of Excellence Since 1948

Prices and specifications subject to change without notice • F.O.B. the Factory